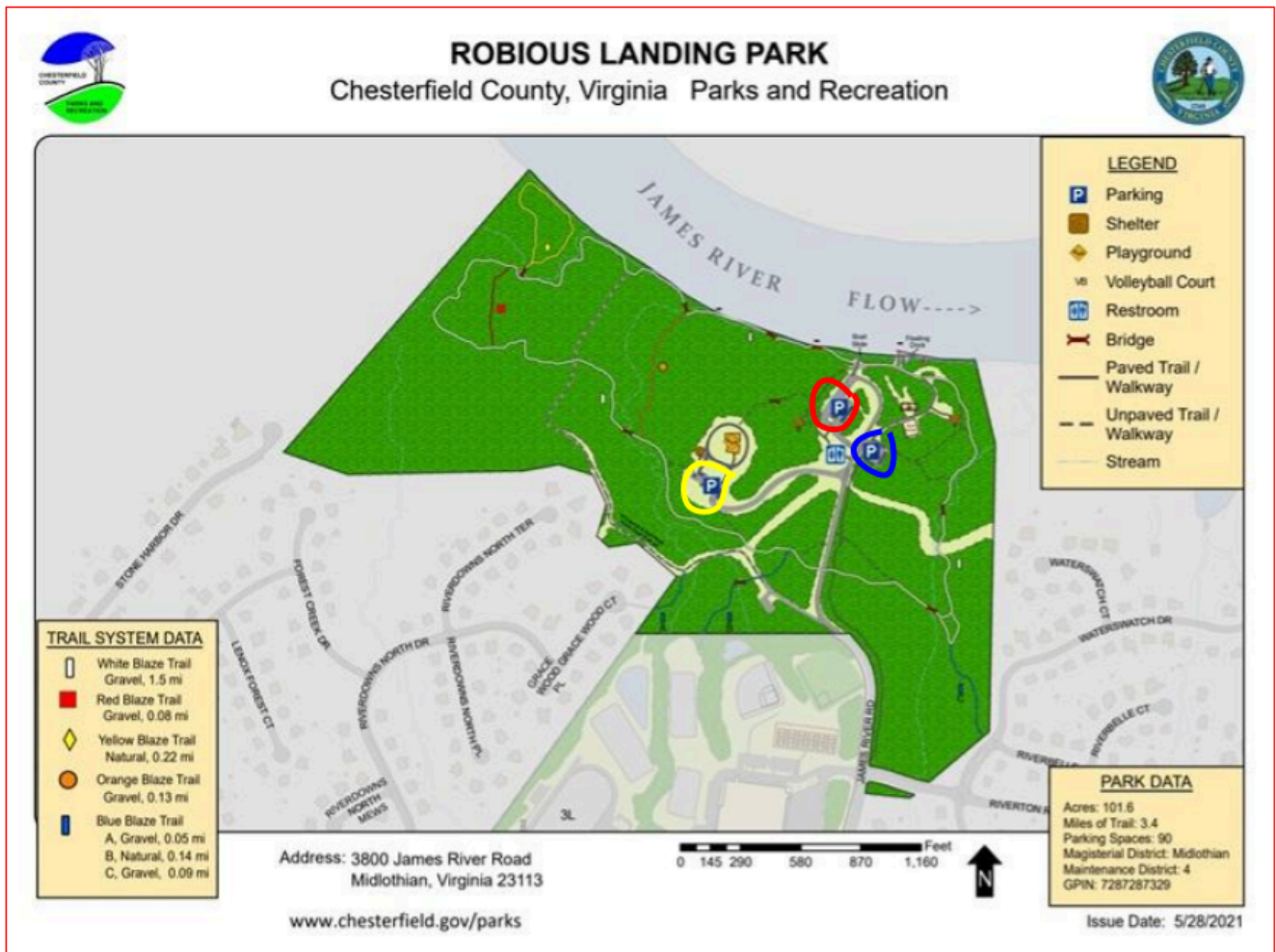


## About Robious Landing Park:

Through a cooperative public/private effort between the County of Chesterfield and the Virginia Boat Club, the Virginia Boat Club manages the Robious Landing Boathouse and dock for the benefit of the rowing community. Currently, the space is used by the Virginia Boat Club Masters, James River High School, River City Crew, and occasionally the crew teams from the University of Richmond and VCU.



## Parking

There are multiple parking locations available in the park. The parking lot with the **red circle** will be designated for trailers. You will need to navigate through the loop in order to access the trailer parking lot after arriving at the address 3800 James River road. The **blue circled** parking lot will be reserved for team vans and team parking. The **yellow circled** parking lot is for overflow parking where spectators or other teams may park if the space is needed. There will be multiple signs up as well as volunteers helping guide cars during the regatta.

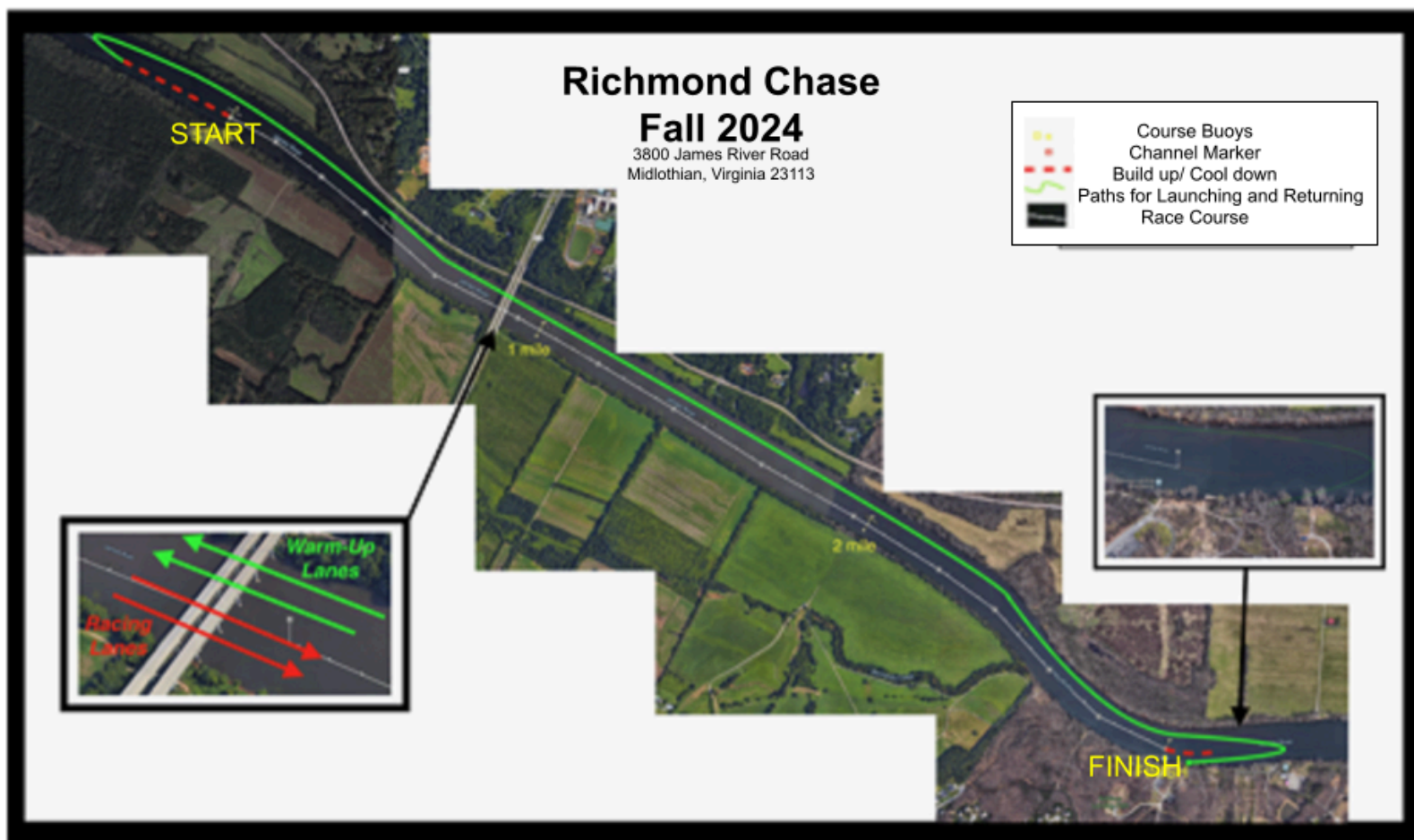
Zoomed in satellite image of park:



**Extra notes about the park:**

- **Restrooms**- The park has restrooms available to your convenience, and we will also be offering port-a-potties on site.
- **Grills** - Gas grills *are* permitted in the park. Please keep grills clear of any trees or branches, as well as any food tents. The County Park staff requests that you have a fire extinguisher should you choose to use a grill. Electric generators are also permitted but must be the 'quiet' type.
- **Trash** - Trash should be placed in closed bags and left beside the park trash receptacles. Loose trash is not permitted so please bag and seal anything that may need to be thrown away as a courtesy to the park and their staff. County staff will remove the trash from there.
- **Team Tents**- Team tents are free to set up where they'd like. We highly suggest that they stay near the trailer/car parking lot or with a view of the dock space.

## About the Course



Crews will use the floating dock located at 3800 James River Road for launching and returning boats. We recommend launching 40-60 minutes prior to the start time to give your boat time to warm up. Crews will row upstream to the start line following the traffic pattern marked above. The course is a 5k with a chute built in before the start line with crews starting at roughly 20 second intervals. The course has a slight turn towards the end of the race and is otherwise relatively straight. There will be course buoys throughout the course as well as at the start and finish line for coxswains to follow.